

## Specification sheet LX 3005

### Parapet drainage

## VARIO upstand spout with double pipe for bending on site

**Emergency drainage**

**Gravity flow**

**Silent**



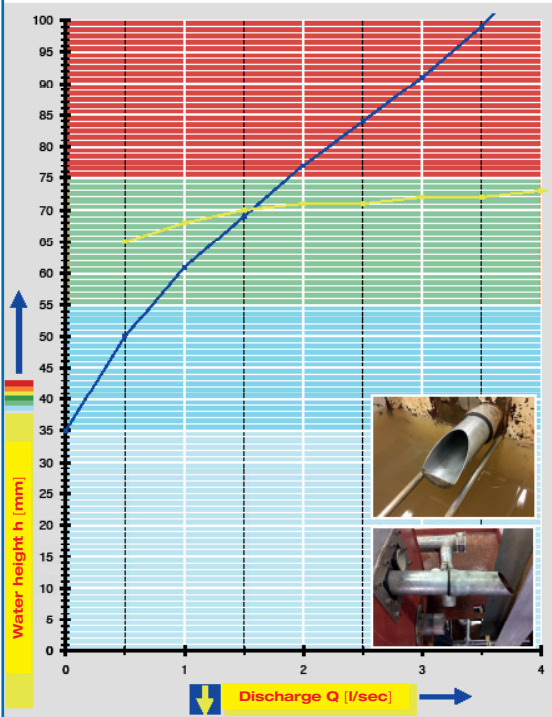
Note:  
Measured runoff refers on a pipe.  
Nominal drain is for double pipe doubled!

<b>Discharge rate:</b>	<b>2.8 l/sec</b>
<b>Water height:</b>	<b>35 mm</b>
<b>Roof penetration:</b>	<b>0 mm</b>
<b>Diameter:</b>	<b>DN 70</b>
<b>LX-Number:</b>	<b>LX3005</b>
<b>Weir height:</b>	-
<b>Drain:</b>	<b>ventilated</b>
<b>Downpipe:</b>	<b>ventilated</b>
<b>Downpipe height:</b>	-
<b>Drainage:</b>	<b>on floor</b>
<b>Flange form:</b>	<b>Bonding flange</b>

#### LX 3005 Piece list

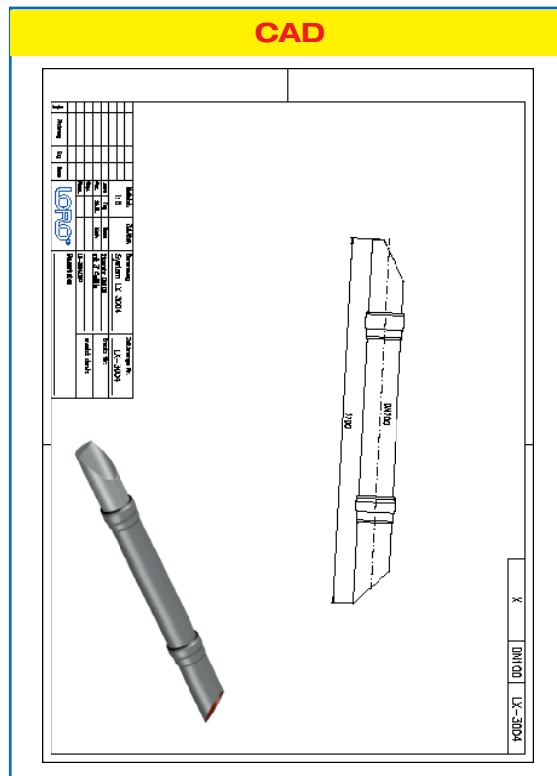
- 1 x Art.-No. 13072.070X, LORO-X VARIO upstand Spout with double pipe
- 1 x Art.-No. 13214.070X, LORO-X Pitot tube
- 1 x Art.-No. 00911.070X, LORO-X Sealing element
- 1 x Art.-No. 00986.000X, LORO-X Lubricant

#### hQ - Head Discharge curve



**Systempower**

#### CAD



**Systemshape**

<b>Water height</b>	mm	10	15	20	25	30	35	40	45	50	55	60	65	70	75	80	85	90	95
<b>Discharge</b>	l/sec	-	-	-	-	-	-	-	-	-	0,6	0,8	1,0	1,2	1,4	1,5	1,6	1,8	1,9
<b>Silent</b>																			

## LORO-X VARIO upstand spout with double pipe for bending on site

DN 70

### LX3005-20X

Drain Art.-No. 13072.070X  
Weight: 3,4 kg

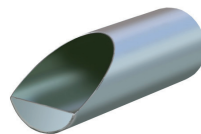
**VARIO Kant spout with double pipe**



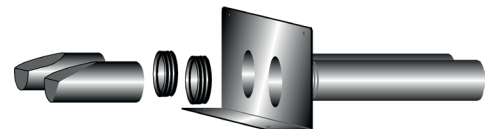
+

**LORO-X Pitot tube**

Art.-No. 13214.070X  
Weight: 0,5 kg



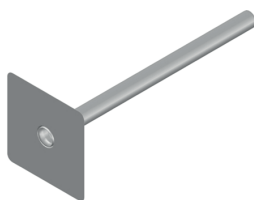
=



### LX3005-20X

Drain Art.-No. 15072.070X  
Weight: 2,4 kg

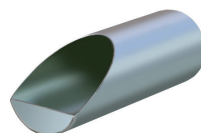
**VARIO Kant upstand spout for bending on site**



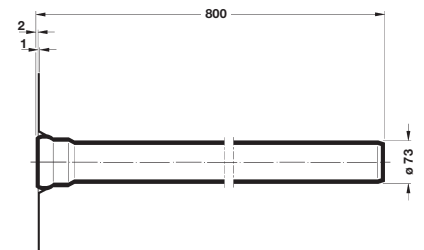
+

**LORO-X Pitot tube**

Art.-No. 13214.070X  
Weight: 0,5 kg



=



**Heat tracing:** Lorowerk recommends to check all drains and pipes with regard to their frost-sensibility. Where necessary, these parts should be upgraded with heat tracing.